

KARIBAN

REFERENCE : K236

NAME : KIM

SIZES : XS_S_M_L_XL_XXL

COMPOSITION :

Main fabric : Cotton / Elastane Pique 220 95%cotton / 5%elastane

COLORS	PANTONE SERIGRAPHIE
White	White
Black	Black

WEIGHT :

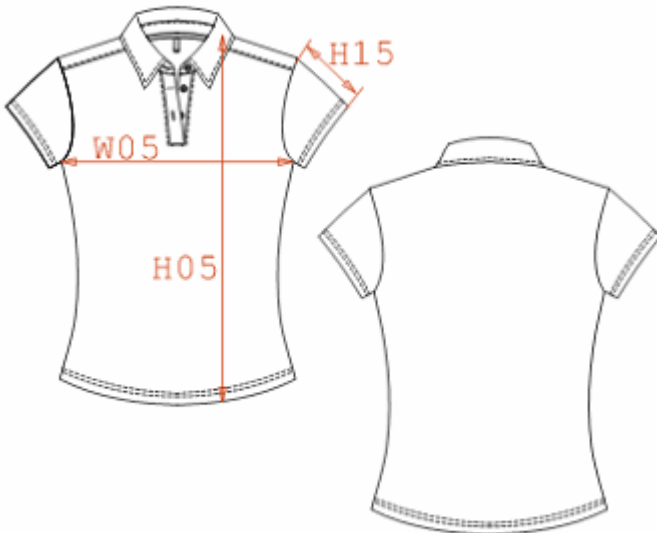
Main fabric : 220 gsm

FABRIC CONSTRUCTION AND FINISHING :

Pique

DESCRIPTION

Français :	Polo femme manches courtes
English :	Short sleeve polo
Nederlands :	Damespolo met korte mouwen
Deutsch :	Damen kurzarm-polohemd
Español :	Polo de manga corta para mujer
Italiano :	Polo donna maniche corte
Português :	Polo pique de senhora manga curta



MEASUREMENT

Description	XS	S	M	L	XL	XXL
H05 Hauteur totale/total height	58,40	59,85	61,35	62,85	65,10	67,35
W05 1/2 largeur poitrine/1/2 chest width	42	44	46	48	51	54
H15 longueur manche / Sleeve length	9,80	10,80	11,80	12,80	14,05	15,30

PACKING

Box	25 pcs / box XS => L:44cm W:33cm H:17cm GW:6.40kg NW:5.00kg S => L:44cm W:33cm H:17cm GW:6.400kg NW:5.00kg M => L:44cm W:33cm H:17cm GW:6.40kg NW:5.00kg L => L:44cm W:33cm H:17cm GW:6.40kg NW:5.00kg XL => L:47cm W:33cm H:17cm GW:7.10kg NW:5.60kg XXL => L:47cm W:33cm H:17cm GW:7.10kg NW:5.60kg
-----	---

CARE LABEL

