

KARIBAN

REFERENCE : K237

NAME : RAY

SIZES : M_L_XL_XXL

COMPOSITION :

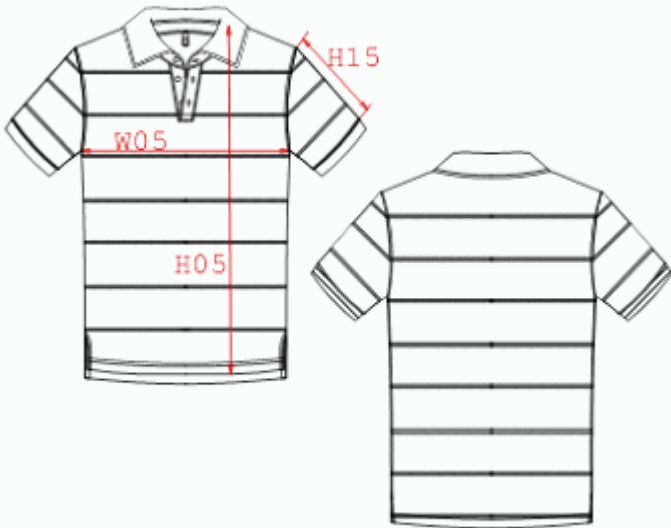
Main fabric : Jersey 210 100%cotton
 Main fabric : Jersey 210 For contrasted stipes 100%cotton

WEIGHT :

Main fabric : 210 gsm
 Main fabric : 210 gsm

COLORS	PANTONE SERIGRAPHIE
Red / White	186C / White
Orange / White	1505C / White
Sky blue / White	277C / White
Navy / White	2965C / White
Light green / White	359C / White

DESCRIPTION	
Français :	Polo rayé bicolore manches courtes
English :	Sewn stripe bi-colour polo shirt
Nederlands :	Tweekleurige gesteepte polo met korte mouwen
Deutsch :	Zweifarbigen kurzarm streifen-polohemd
Español :	Polo bicolor de manga corta a rayas
Italiano :	Polo rigato bicolore maniche corte
Português :	Polo bicolor manga curta



MEASUREMENT						
Description	M	L	XL	2XL		
H05 Hauteur totale devant / Front total height	70	72	74,75	77,50		
W05 1/2 largeur poitrine / 1/2 chest width	51	54	58	62		
H15 Longueur manche / Sleeve length	20	21	22,25	23,50		

PACKING	
Box	20 pcs / box M => L:60cm W:42cm H:13cm GW:7.20kg NW:5.80kg L => L:60cm W:42cm H:13cm GW:7.20kg NW:5.80kg XL => L:60cm W:42cm H:13cm GW:7.20kg NW:5.80kg XXL => L:60cm W:42cm H:13cm GW:7.20kg NW:5.80kg

CARE LABEL				