

# KARIBAN

1/2

REFERENCE : K541

NAME :

SIZES : S\_M\_L\_XL\_XXL\_3XL\_4XL\_5XL\_6XL

**COMPOSITION :**

Main fabric : Cotton poplin 120 100%cotton

Main fabric : Cotton poplin 125 100%cotton

**WEIGHT :**

Main fabric : 120 gsm

Main fabric : 125 gsm

**FABRIC CONSTRUCTION AND FINISHING :**

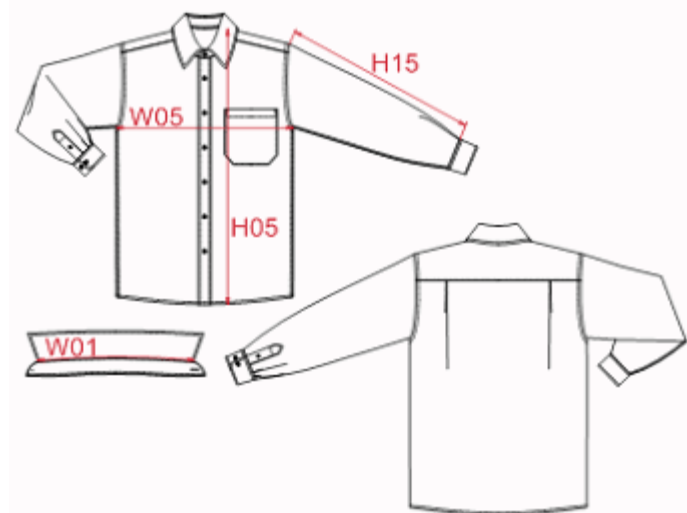
Resin coating for easier ironing

COLORS	PANTONE SERIGRAPHIE
White	White
Black	Black
Navy	296C
Classic red	200C
Zinc	447C
Bright sky	2708C

DESCRIPTION	
<b>Français :</b>	Chemise homme manches longues
<b>English :</b>	Men's long sleeve easy care cotton poplin shirt
<b>Nederlands :</b>	Heren overhemd met lange mouwen
<b>Deutsch :</b>	Pflegeleichtes baumwolle popeline herren langarm hemd
<b>Español :</b>	Camisa de manga larga
<b>Italiano :</b>	Camicia uomo maniche lunghe popeline
<b>Português :</b>	Camisa manga comprida em popeline de tratamento fácil



MEASUREMENT									
Description	S	M	L	XL	2XL	3XL	4XL	5XL	6XL
<b>W01</b> Longueur encolure / Neckline length	41,25	42,50	43,75	45	46,25	47,90	49,50	51,20	52,80
<b>W05</b> 1/2 largeur poitrine / 1/2 chest width	54	57	60	63	66	69	72	75	78
<b>H15</b> Longueur manche sans poignet / Sleeve length without cuff	57,50	59,50	61,50	63,50	65,50	67,50	69,50	71,50	73,50
<b>H05</b> Hauteur totale dos / Back total height	74,50	76,50	78,50	80,50	82,50	84,50	86,50	88,50	90,50



PACKING	
Box	12 pcs / box S => L:56 W:37 H:20cm GW:5.6kg NW:3.8kg M => L:56 W:37 H:20cm GW:5.7kg NW:3.9kg L => L:56 W:37 H:20cm GW:5.8kg NW:4kg XL => L:56 W:37 H:20cm GW:5.9kg NW:4.1kg XXL => L:56 W:37 H:20 GW:6kg NW:4.2kg 3XL => L:56 W:37 H:20cm GW:6.1kg NW:4.3kg 4XL => L:56 W:37 H:20cm GW:6.2kg NW:4.4kg 5XL => L:56 W:37 H:20cm GW:6.3kg NW:4.5kg 6XL => L:56 W:37 H:20cm GW:6.4kg NW:4.6kg