

KARIBAN

1/2

REFERENCE : K770

NAME : BERMUDA

SIZES : S_M_L_XL_XXL_3XL

COMPOSITION :

Main fabric : Cotton twill 275 100%cotton

COLORS	PANTONE SERIGRAPHIE
Navy	296C
Beige	Warm gray 9C
White	White

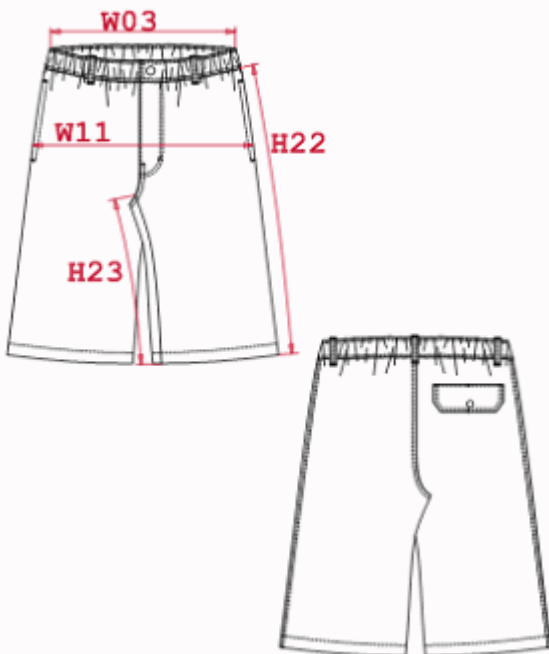
WEIGHT :

Main fabric : 275 gsm

FABRIC CONSTRUCTION AND FINISHING :

108x56 / 16x12 Garment washed

DESCRIPTION	
Français :	Bermuda
English :	Bermuda shorts
Nederlands :	Bermuda
Deutsch :	Bermuda
Español :	Bermudas
Italiano :	Bermuda
Português :	Bermuda homem



MEASUREMENT						
Description	S	M	L	XL	2XL	3XL
W03 Longueur taille élastiquée / Elasticated waist length	32	34	37	39	41,50	43
W11 1/2 bassin / 1/2 hip width	50	53	56	59	62	66
H22 Longueur côté / Side length	45,50	47,25	49	50,75	52,50	54,25
H23 Longueur entrejambe / Inside leg length	23,50	24,50	25,50	26,50	27,50	28,50

PACKING	
Box	25 pcs / box S => L:59cm W:37cm H:25cm GW:11.10kg NW:8.60kg M => L:59cm W:37cm H:25cm GW:11.30kg NW:8.80kg L => L:59cm W:37cm H:25cm GW:11.50kg NW:9.00kg XL => L:59cm W:37cm H:25cm GW:11.80kg NW:9.30kg 2XL => L:59cm W:37cm H:25cm GW:12.00kg NW:9.50kg 3XL => L:59cm W:37cm H:25cm GW:12.30kg NW:9.80kg

CARE LABEL				