

KARIBAN

REFERENCE : K974

NAME :

SIZES : S_M_L_XL_XXL_3XL_4XL

COMPOSITION :

Main fabric : Jersey knit Combed cotton - 240 100%cotton
 Main fabric : Reverse jersey knit Combed cotton - 240 For back yoke 100%cotton

| COLORS | PANTONE SERIGRAPHIE |
|---------------|---------------------|
| Light Navy | 533C |
| Tropical blue | 633C |
| Lime | 376C |
| Red | 187C |

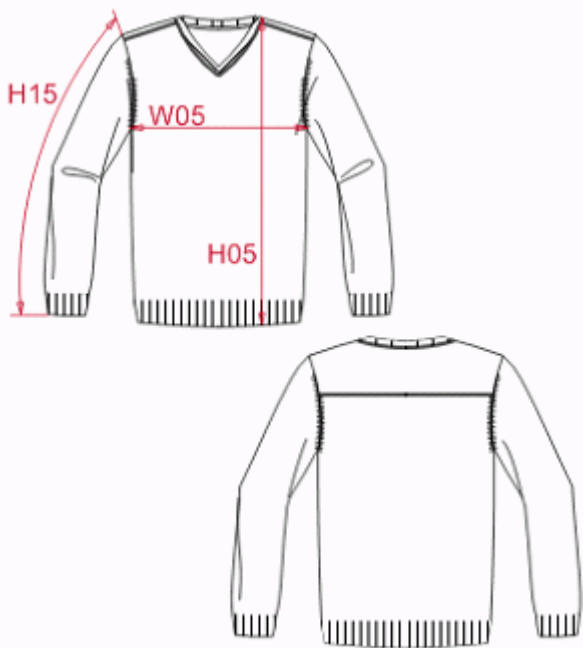
WEIGHT :

Main fabric : ± 240 gsm
 Main fabric : ± 240 gsm

FABRIC CONSTRUCTION AND FINISHING :

Gauge: 12gg

| DESCRIPTION | |
|---------------------|-----------------------------|
| Français : | Pull homme col V |
| English : | Men's V-neck jumper |
| Nederlands : | Heren pullover met V-hals |
| Deutsch : | Damen V-ausschnitt pullover |
| Español : | Jersey escote de pico |
| Italiano : | Maglia uomo scollo a V |
| Português : | Pullover de homen decote V |



| MEASUREMENT | | | | | | | |
|---|-------|-------|-------|-------|-------|-------|-------|
| Description | S | M | L | XL | XXL | 3XL | 4XL |
| H05 Hauteur totale / Total height | 68,50 | 70,50 | 72,50 | 74,50 | 76,50 | 78,50 | 81,25 |
| W05 1/2 largeur poitrine / 1/2 chest width | 47 | 50 | 53 | 56 | 59 | 62 | 66 |
| H15 Longueur manche / Sleeve length | 66 | 67,50 | 69 | 70,50 | 72 | 73,50 | 75,50 |

| PACKING | |
|---------|--|
| Box | 10 pcs / box S-M => L:60cm W:40cm H:8cm GW:4.10kg NW:3.00kg L-XXL => L:60cm W:40cm H:9cm GW:4.10kg NW:3.00kg 3XL-4XL => L:60cm W:40cm H:10cm GW:4.10kg NW:3.00kg |

| CARE LABEL | | | | |
|------------|--|--|--|--|
| | | | | |