



REFERENCE : PA203

NAME : UBMA

SIZES : XS_S_M_L_XL_XXL_3XL

COMPOSITION :

Main fabric : Nylon taslon 130 100%polyamide
 Main fabric : Nylon taslon 130 For contrasted yokes 100%polyamide
 Fabric 2 : Micropolar fleece 200 For body lining 100%polyester
 Lining 2 : Lining 210T For sleeve, hood and pocket 100%polyester
 Wad 2 : Polyfil 65 For sleeves 100%polyester

WEIGHT :

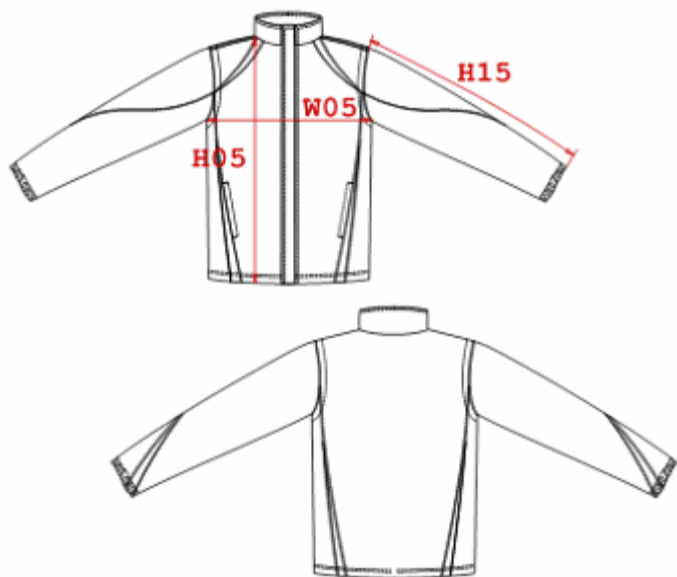
Main fabric : 130 gsm
 Main fabric : 130 gsm
 Fabric 2 : 200 gsm
 Lining 2 : 60 gsm
 Wad 2 : 65 gsm

FABRIC CONSTRUCTION AND FINISHING :

With AC coating

COLORS	PANTONE SERIGRAPHIE
Black / Grey	Black / 430C
Red / White	186C / White
Navy / Grey	2965C / 430C

DESCRIPTION	
Français :	Blouson sport adulte manches amovibles
English :	Sports blouson jacket with detachable sleeves
Nederlands :	Sportjas met afneembare mouwen
Deutsch :	Sportblouson mit abnehmbaren ärmeln
Español :	Chaqueta deportiva con mangas desmontables
Italiano :	Giubbotto sport con maniche staccabili
Português :	Blusão de treinador



MEASUREMENT							
Description	XS	S	M	L	XL	XXL	3XL
H05 Hauteur totale / Total height	73,80	75,80	77,80	79,85	81,85	84,65	87,40
W05 1/2 largeur poitrine / 1/2 chest width	55	58	61	64	67	71	75
H15 Longueur manche / Sleeve length	69,10	70,70	72,25	73,85	75,45	77,70	80

PACKING	
Box	10 pcs / box XS-S => L:58cm W:38cm H:18cm GW:7.70kg NW:7.00kg M-L => L:60cm W:40cm H:18cm GW:8.40kg NW:7.70kg XL-3XL => L:71cm W:43cm H:18cm GW:9.60kg NW:8.40kg

CARE LABEL				