

REFERENCE : SP105

NAME :

SIZES : 38_40_42_44_46_48_50_52_54

COMPOSITION :

Main fabric : Peached cotton heavy canvas 270
100%cotton

WEIGHT :

Main fabric : 270 gsm

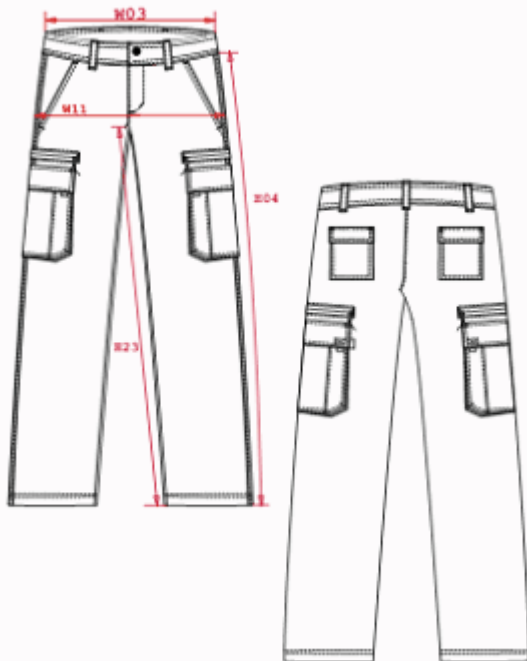
FABRIC CONSTRUCTION AND FINISHING :

Garment washed

COLORS	PANTONE SERIGRAPHIE
Khaki	419C
Navy	296C
Beige	7530C
Black	Black
Dark grey	432C

DESCRIPTION

- Français :** Pantalon homme
- English :** Trousers
- Nederlands :** Herenpantalon
- Deutsch :** Cargo herrenhose
- Español :** Pantalón para hombre
- Italiano :** Pantaloni uomo
- Português :** Calças



MEASUREMENT

Description	38	40	42	44	46	48	50	52	54
W03 1/2 largeur taille / 1/2 waist width	39	41	43	45	47	49	51	53	55
W11 1/2 bassin / 1/2 hip width	51	53	55	57	59	61	63	65	67
H04 Hauteur coté / Side length	103,2 5	103,7 5	104,2 5	105,7 5	107,2 5	108,7 5	110,2 5	110,7 5	11,25
H23 Longueur entrejambe / Inside leg length	84	84	84	85	86	87	88	88	88

PACKING

Box	20 pcs / box 38 => L:60cm W:38cm H:15cm GW:6.00kg NW:5.00kg 40 => L:60cm W:38cm H:15cm GW:6.30kg NW:5.30kg 42 => L:60cm W:38cm H:15cm GW:6.50kg NW:5.50kg 44 => L:60cm W:38cm H:15cm GW:6.80kg NW:5.80kg 46 => L:60cm W:38cm H:15cm GW:7.00kg NW:6.00kg 48 => L:60cm W:38cm H:15cm GW:7.20kg NW:6.20kg
-----	--

CARE LABEL

